

## Steam Traps

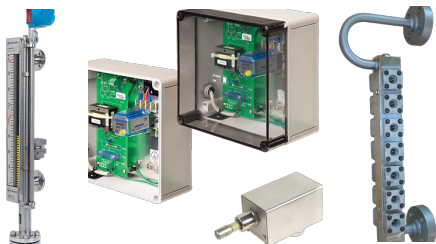
Steam traps are self-actuated valves used to release condensate and air from steam distribution systems without allowing the passage of steam. Due to a wide range of process requirements, steam traps come in a variety of technologies, each with their own advantages and trade-offs. Steam traps play a large role in optimizing plant efficiency and environmental emissions, increasing the criticality when sizing and selecting the ideal steam trap for each application.



Yarway Float & Thermostatic Steam Traps | Yarway Process Thermostatic Steam Traps | Yarway Process Thermodynamic Steam Traps | Yarway Universal Steam Traps | Yarway Drip & Tracer Steam Traps | Yarway Bimetallic Steam Traps | Yarway Series 900 WYE Type Strainer

## Boiler Level Instrumentation

- Meets ASME requirements for direct and remote indication of boiler water level
- Available for low, medium, and high-pressure applications.



Yarway ColorPort Water Level Gauges | Yarway Series 4300N/4600N Liquid Level Gauge | Penberthy Magnetic Liquid Level Gauges | Yarway Electronic Level Indication | Penberthy Flat Glass Gagecocks & Gages | Yarway ARC Pump Protection Valves | Penberthy Series LL, LM, LH, GL, GH Jet Pumps

## Boiler Trim Valves



- Remove sludge or solids from the Boiler Drum
- Remove dissolved solids from the Boiler Drum
- For venting, draining, and isolation applications

Yarway Welbond High Pressure Globe Valves | Yarway Blow-off Valves | Yarway Series 5500 Globe Valves | Yarway Series 5525/5535 Globe Valves | Yarway Series 5505 Blowdown Globe Valves | Yarway Hy-Drop Throttling Valve

## Steam Conditioning & Desuperheating

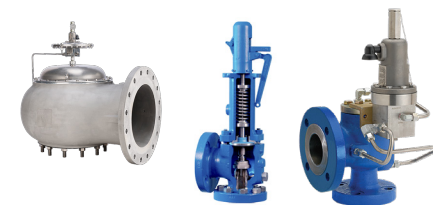
A desuperheater injects a controlled, predetermined amount of water into a steam flow to lower the temperature of the steam. Steam conditioning valves control steam pressure and temperature by combining both functions within one integral control unit. These valves address the need for better control of steam conditions brought on by increased energy costs and more rigorous plant operation.

- Improve thermal efficiency and protect downstream equipment
- Control steam temperature and pressure better to improve your reliability



## Pressure & Safety Relief Valves

Protecting steam processes against over-pressure can be a challenging duty. From low pressure steam to super-critical boilers, each safety valve is supported with some of the largest steam testing facilities in the world.



Crosby Style HSJ | Crosby Style HE ISOLFLEX | Anderson Greenwood Series 727 | Anderson Greenwood Series 5200 | Sempell Type SOH | Sempell Type PRV

- Provides advanced, reliable, and efficient overpressure protection
- Certified to a range of regional and global safety standards

## Additional Steam Solutions

- Spraywater Control Valves
- Instrumentation and Accessories
- Drum Level Control Valves
  - Steam Turbines
- Pressure Control Regulators

### Caltron Locations

8AM-5PM M-F AND EMERGENCY 24/7 SUPPORT CALL TOLL FREE (877) 827-8131

**Corporate Office**  
1385 Pama Lane, Suite 111  
Las Vegas, NV 89119

**Benicia Office**  
531 Getty Ct., Suite A  
Benicia, CA 94510

**Chandler Office**  
2900 S. Gilbert Rd. #6  
Chandler, AZ 85286

**Hawaii Office**  
94-432 Maikoiko St. Suite 120  
Waipahu, HI 96797

**Irvine Office**  
300 Commerce #100  
Irvine, CA 92602

**Livermore Office**  
2685 Collier Canyon Rd.  
Livermore, CA 94551

**Ontario Office**  
3536 Concoors St. Suite 305  
Ontario, CA 91764

**Paramount Office**  
6851 Walthall Way  
Paramount, CA 90723

**Taft Office**  
801 Black Gold Ct.  
Taft, CA 93268

## Our Services

STEAM, CONDENSATE, COMPRESSED AIR SYSTEM WALK-DOWNS

ENERGY AUDITS FOR STEAM, CONDENSATE, AND COMPRESSED AIR SYSTEMS

SAFETY RELIEF VALVE TESTING AND REPAIR

ONLINE STEAM TRAP AND SAFETY RELIEF VALVE MONITORING

VALVE REPAIR

BOILER TRIM AND GAUGE GLASS

REPLACEMENT AND REPAIR

ASSET PERFORMANCE MONITORING

EQUIPMENT RELIABILITY MONITORING

COMMISSIONING AND STARTUP SUPPORT

BOILER EFFICIENCY IMPROVEMENTS

BMS PACKAGES

24/7 EMERGENCY SUPPORT

24/7 SERVICE

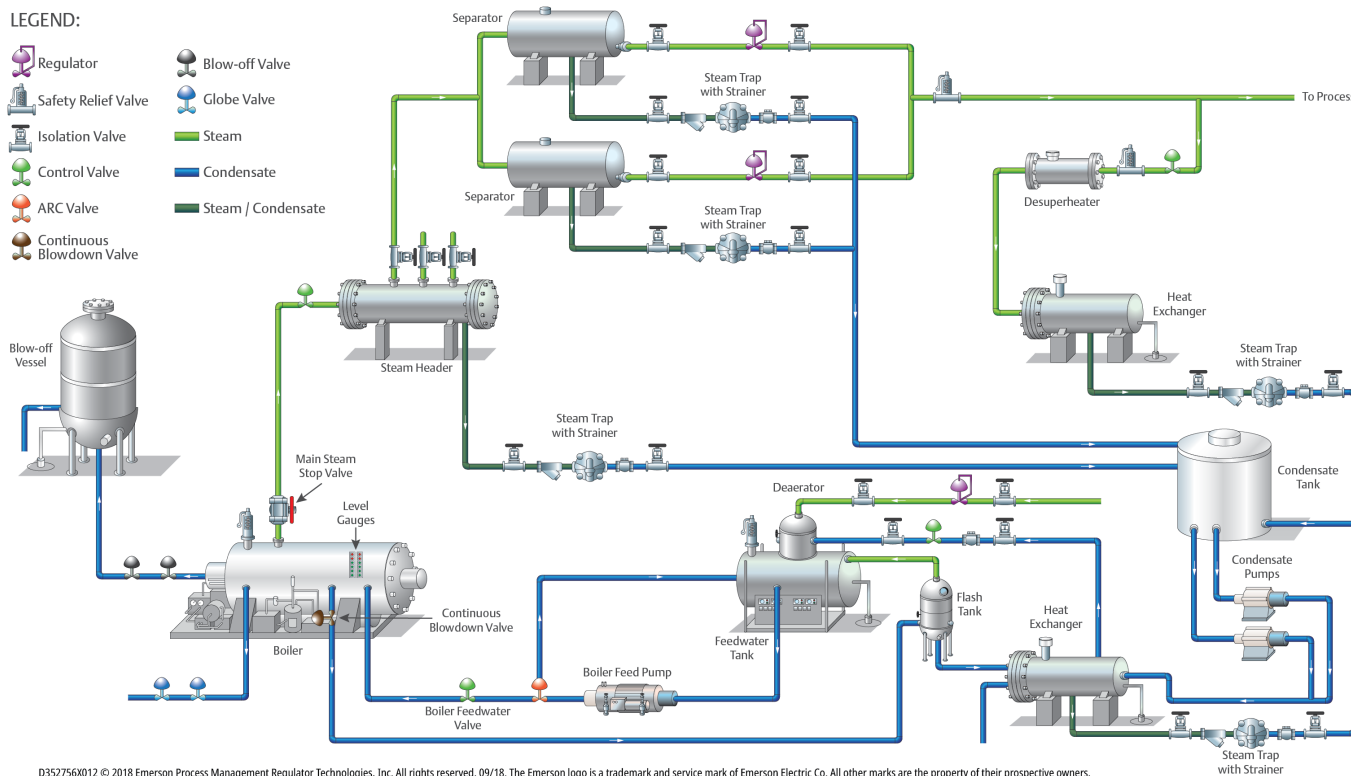
(877) 827-8131

WWW.CALCTRL.COM

## Steam Application Map

LEGEND:

- Regulator
- Blow-off Valve
- Safety Relief Valve
- Globe Valve
- Isolation Valve
- Control Valve
- ARC Valve
- Continuous Blowdown Valve
- Steam
- Condensate
- Steam / Condensate



D352756X012 © 2018 Emerson Process Management Regulator Technologies, Inc. All rights reserved. 09/18. The Emerson logo is a trademark and service mark of Emerson Electric Co. All other marks are the property of their prospective owners.

## Brands

ANDERSON GREENWOOD™

ASCO™ CROSBY™

FISHER™ KEYSTONE™

PENBERTHY™ SEMPELL™

VANESSA™ YARWAY

**ASHCROFT®**

### Caltrol Locations

8AM-5PM M-F AND EMERGENCY 24/7 SUPPORT CALL TOLL FREE (877) 827-8131

**Corporate Office**  
1385 Pama Lane, Suite 111  
Las Vegas, NV 89119

**Benicia Office**  
531 Getty Ct., Suite A  
Benicia, CA 94510

**Chandler Office**  
2900 S. Gilbert Rd. #6  
Chandler, AZ 85286

**Hawaii Office**  
94-432 Maikoiko St. Suite 120  
Waipahu, HI 96797

**Irvine Office**  
300 Commerce #100  
Irvine, CA 92602

**Livermore Office**  
2685 Collier Canyon Rd.  
Livermore, CA 94551

**Ontario Office**  
3536 Concours St. Suite 305  
Ontario, CA 91764

**Paramount Office**  
6851 Walthall Way  
Paramount, CA 90723

**Taft Office**  
801 Black Gold Ct.  
Taft, CA 93268